



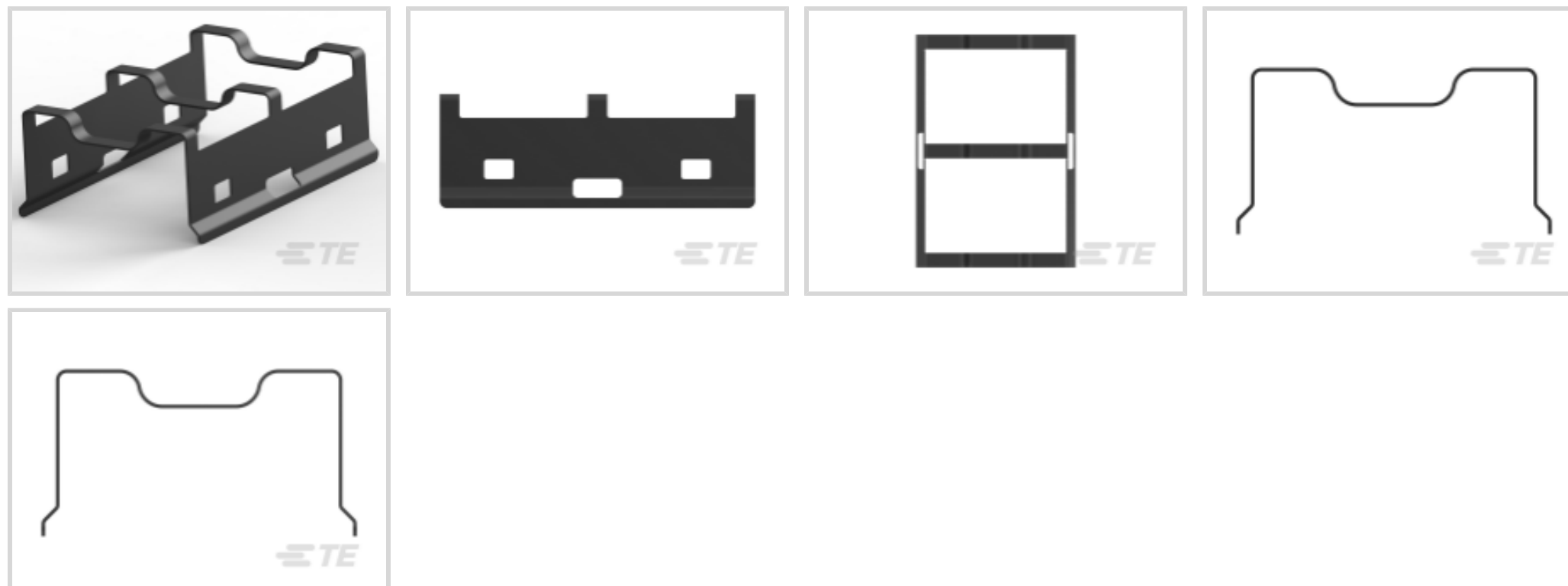
XFP

TE Internal #: 1489948-2

Heat Sinks, XFP, 15W / 5W / 10W Power Rating, XFP

[View on TE.com >](#)

Connectors > Socket Connectors > IC & Component Socket Accessories > Heat Sinks



Device Type: XFP

Power Rating: 5 W, 10 W, 15 W

Features

Product Type Features

| | |
|-------------|-----|
| Device Type | XFP |
|-------------|-----|

Electrical Characteristics

| | |
|--------------|-----------------|
| Power Rating | 5 W, 10 W, 15 W |
|--------------|-----------------|

Body Features

| | |
|----------------------------------|--------------|
| Primary Product Plating Material | Tin |
| Primary Product Material | Copper Alloy |

Product Compliance

[For compliance documentation, visit the product page on TE.com>](#)

| | |
|---|---|
| EU RoHS Directive 2011/65/EU | Compliant |
| EU ELV Directive 2000/53/EC | Compliant |
| China RoHS 2 Directive MIIT Order No 32, 2016 | No Restricted Materials Above Threshold |
| EU REACH Regulation (EC) No. 1907/2006 | Current ECHA Candidate List: JUNE 2022 (224) Candidate List Declared Against: JUNE 2022 (224) Does not contain REACH SVHC |
| Halogen Content | Low Halogen - Br, Cl, F, I < 900 ppm per homogenous material. Also BFR/CFR/PVC Free |

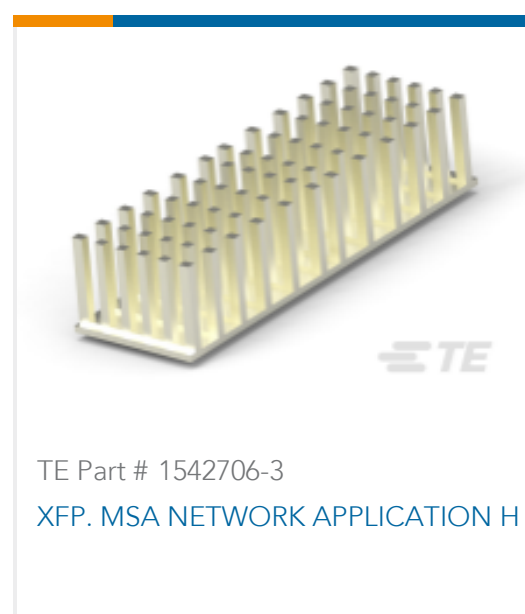
Solder Process Capability

Not applicable for solder process capability

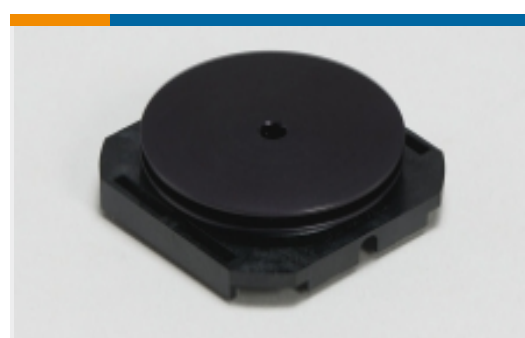
Product Compliance Disclaimer

This information is provided based on reasonable inquiry of our suppliers and represents our current actual knowledge based on the information they provided. This information is subject to change. The part numbers that TE has identified as EU RoHS compliant have a maximum concentration of 0.1% by weight in homogenous materials for lead, hexavalent chromium, mercury, PBB, PBDE, DBP, BBP, DEHP, DIBP, and 0.01% for cadmium, or qualify for an exemption to these limits as defined in the Annexes of Directive 2011/65/EU (RoHS2). Finished electrical and electronic equipment products will be CE marked as required by Directive 2011/65/EU. Components may not be CE marked. Additionally, the part numbers that TE has identified as EU ELV compliant have a maximum concentration of 0.1% by weight in homogenous materials for lead, hexavalent chromium, and mercury, and 0.01% for cadmium, or qualify for an exemption to these limits as defined in the Annexes of Directive 2000/53/EC (ELV). Regarding the REACH Regulation, the information TE provides on SVHC in articles for this part number is based on the latest European Chemicals Agency (ECHA) 'Guidance on requirements for substances in articles' posted at this URL: <https://echa.europa.eu/guidance-documents/guidance-on-reach>

Compatible Parts



Also in the Series | XFP



Heat Sinks(4)



XFP(31)

Documents

Product Drawings

[XFP HEAT SINK CLIP, PLATED](#)

English

CAD Files

[3D PDF](#)

English

Customer View Model

[ENG_CVM_1489948-2_A.2d_dxf.zip](#)

English

Customer View Model

[ENG_CVM_1489948-2_A.3d_igs.zip](#)

English

Customer View Model

[ENG_CVM_1489948-2_A.3d_stp.zip](#)

English

By downloading the CAD file I accept and agree to the [Terms and Conditions](#) of use.

Datasheets & Catalog Pages

[1773408-1 Pluggable Input/Output Solutions catalog - XFP section](#)

English

[1-1773717-7_PLUGGABLE_IO_QRG_CN](#)

English

[1-1773717-8_PLUGGABLEIO_QRG_TCN](#)

English

[1-1773717-9_HIGH_SPEED_IO_QRG_JA](#)

English

[4-1773455-2 - Quick Reference Guide Pluggable I/O Solutions](#)

English

Product Specifications

[Application Specification](#)

English

Product Environmental Compliance



[MD_1489948-2_052120181328_dmtec](#)

English

[MD_1489948-2_052120181328_dmtec](#)

English